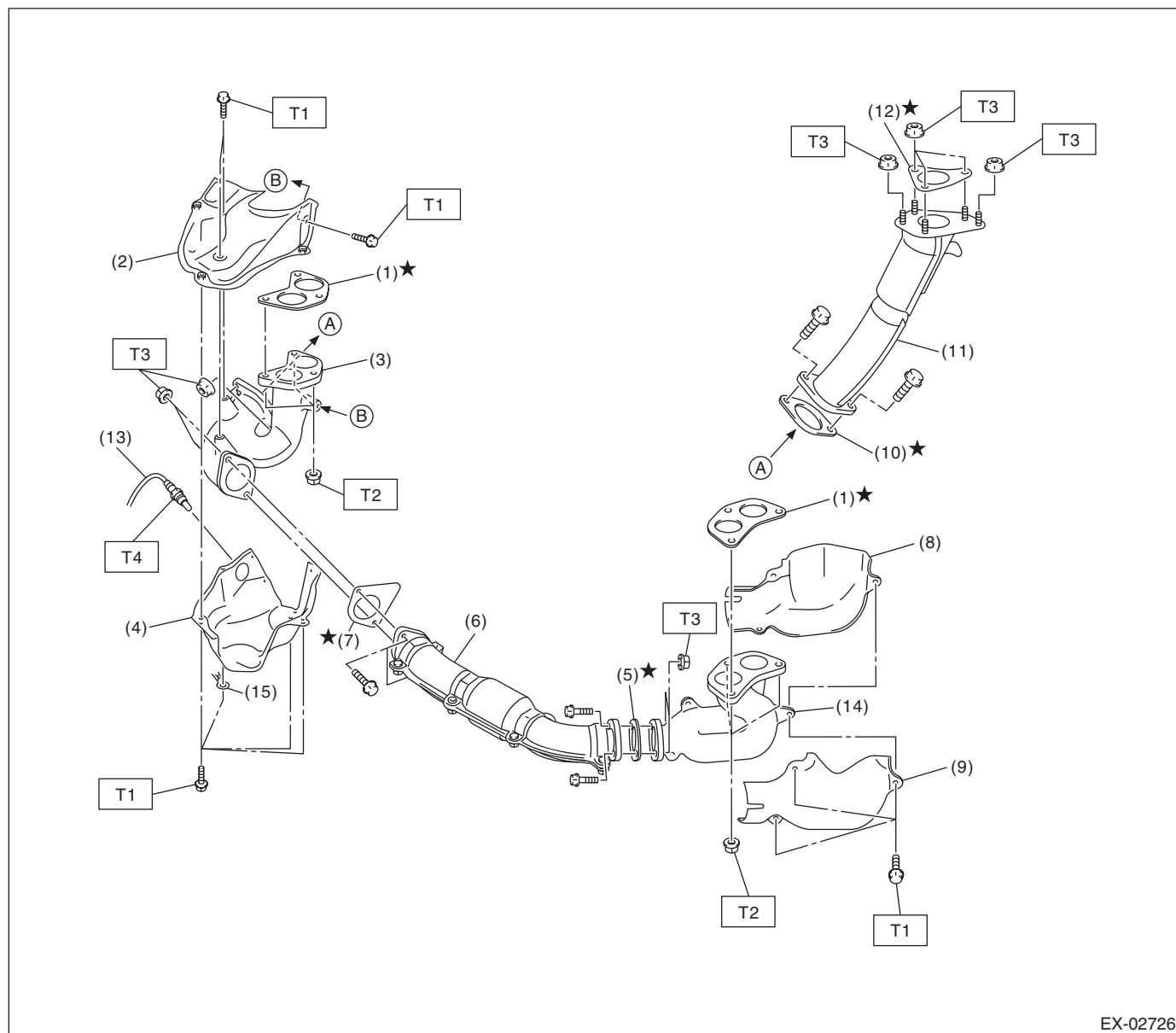


### 1. General Description

#### A: COMPONENT

#### 1. FRONT EXHAUST PIPE



EX-02726

- |                                     |                                     |                   |
|-------------------------------------|-------------------------------------|-------------------|
| (1) Gasket                          | (8) Exhaust manifold LH inner cover | (15) Ground cable |
| (2) Exhaust manifold RH upper cover | (9) Exhaust manifold LH outer cover |                   |
| (3) Exhaust manifold RH             | (10) Gasket                         |                   |
| (4) Exhaust manifold RH lower cover | (11) Joint pipe                     |                   |
| (5) Gasket                          | (12) Gasket                         |                   |
| (6) Front exhaust pipe              | (13) Front oxygen (A/F) sensor      |                   |
| (7) Gasket                          | (14) Exhaust manifold LH            |                   |

#### **Tightening torque: N·m (kgf-m, ft-lb)**

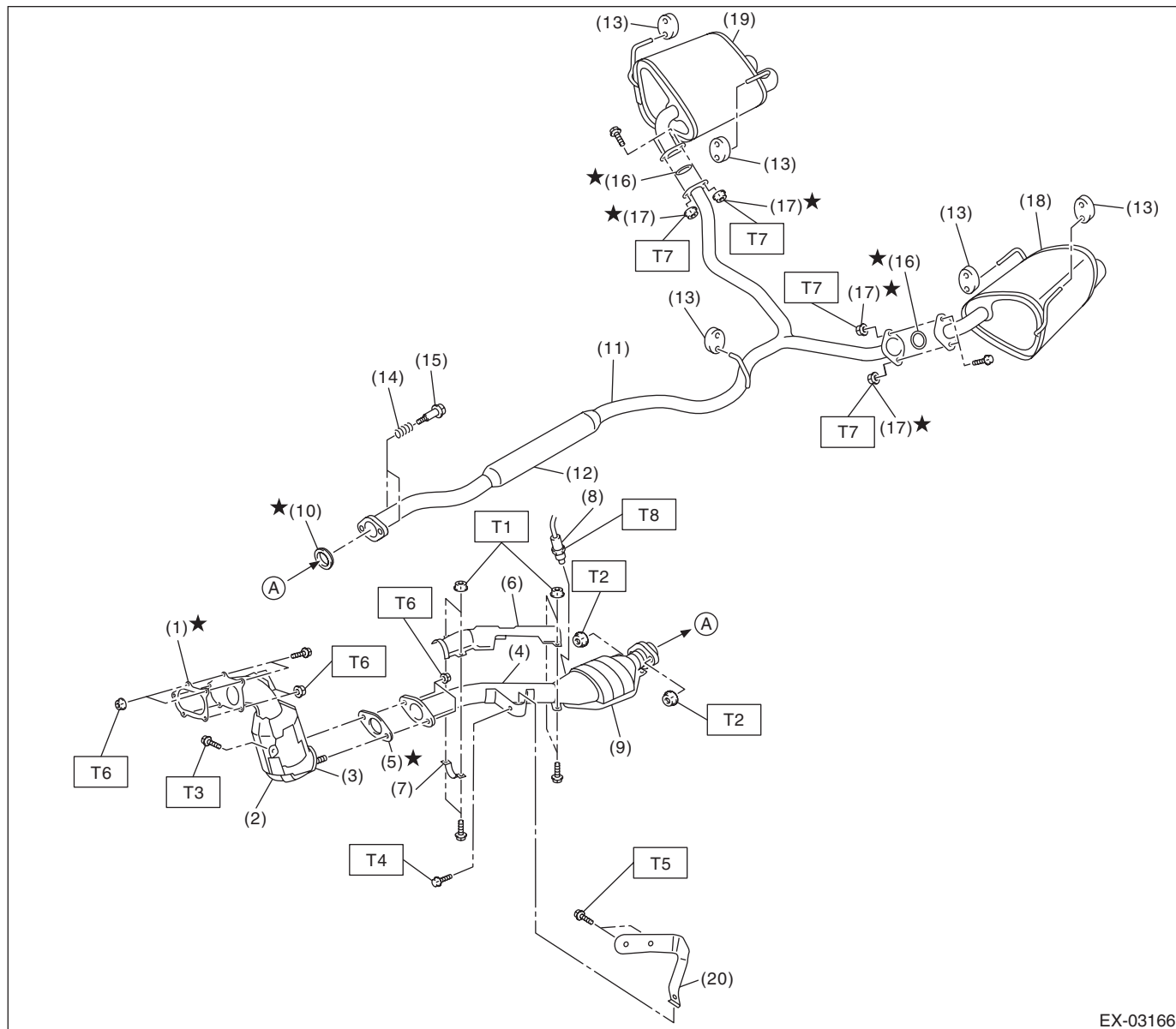
**T1: 19 (1.9, 14.0)**

**T2: 40 (4.1, 29.5)**

**T3: 42.5 (4.3, 31.3)**

**T4: <Ref. to FU(STI)-52, INSTALLATION, Front Oxygen (A/F) Sensor.>**

## 2. CENTER AND REAR EXHAUST PIPE, AND MUFFLER



EX-03166

- |                                     |                       |
|-------------------------------------|-----------------------|
| (1) Gasket                          | (12) Chamber          |
| (2) Front catalytic converter       | (13) Cushion rubber   |
| (3) Center exhaust pipe (front)     | (14) Spring           |
| (4) Center exhaust pipe (rear)      | (15) Bolt             |
| (5) Gasket                          | (16) Gasket           |
| (6) Center exhaust pipe upper cover | (17) Self-locking nut |
| (7) Clamp                           | (18) Muffler LH       |
| (8) Rear oxygen sensor              | (19) Muffler RH       |
| (9) Rear catalytic converter        | (20) Hanger bracket   |
| (10) Gasket                         |                       |
| (11) Rear exhaust pipe              |                       |

### **Tightening torque: N·m (kgf-m, ft-lb)**

**T1: 13 (1.3, 9.6)**

**T2: 18 (1.8, 13.3)**

**T3: 30 (3.1, 22.1)**

**T4: 35 (3.6, 25.8)**

**T5: 40 (4.1, 29.5)**

**T6: 42.5 (4.3, 31.3)**

**T7: 48 (4.9, 35.4)**

**T8: <Ref. to FU(STI)-54, INSTALLATION, Rear Oxygen Sensor.>**

## General Description

### EXHAUST

---

#### **B: CAUTION**

- Prior to starting work, pay special attention to the following:
  1. Always wear work clothes, a work cap, and protective shoes. Additionally, wear a helmet, protective goggles, etc. if necessary.
  2. Protect the vehicle using a seat cover, fender cover, etc.
  3. Prepare the service tools, clean cloth, containers to catch grease and oil, etc.
- Vehicle components are extremely hot immediately after driving. Be wary of receiving burns from heated parts.
- When performing a repair, identify the cause of trouble and avoid unnecessary removal, disassembly and replacement.
- Before disconnecting connectors of sensors or units, be sure to disconnect the ground cable from battery.
- Always use the jack-up point when the shop jacks or rigid racks are used to support the vehicle.
- Remove contamination including dirt and corrosion before removal, installation, disassembly or assembly.
- Keep the removed parts in order and protect them from dust and dirt.
- All removed parts, if to be reused, should be reinstalled in the original positions with attention to the correct directions, etc.
- Bolts, nuts and washers should be replaced with new parts as required.
- Be sure to tighten the fasteners including bolts and nuts to the specified torque.
- If any grease adheres to the exhaust pipe, wipe it off. Otherwise a fire may happen.